

86 Box Wall Type Receiver Manual

86 Wireless Receiver



AC304

AC305



AC306 Front

AC306 Back

1. Specification

1. Unique design of the appearance.
2. 86mm*86mm installation standard.
3. According with standard Fire protection grade.
4. The receiver is compatible with all standard tubular motor.

Remarks:

- Pls obey below rules on the basic of effective electricity allowance.*
1. Keep receiver far from metal parts, or it will affect the receive distance.
 2. Operation distance 80m in the open air.
 3. Min distance between receiver and floor: 1.5m.
 4. Min distance between receiver and ceiling: 0.3m.
 5. Do not cut off power supply before installation.
 6. Avoid static electricity which could damage some electronic components.
 7. Use flexible cable.
 8. Ensure that no longitudinal forces act on the cable carriers.

2. Parameters

| Model No. | Voltage | Loading Power | Frequency | Temperature | Sensitivity | Channel | Operation |
|-----------|--------------|---------------|-----------|-------------|-------------|---------|---------------|
| AC304 | AC 110V/240V | ≤500W | 433.92MHz | -35°C~+65°C | -110dBm | Single | Remote/Manual |
| AC305 | AC 110V/240V | ≤500W | 433.92MHz | -35°C~+65°C | -110dBm | Double | Remote/Manual |
| AC306 | AC 110V/240V | ≤500W | 433.92MHz | -35°C~+65°C | -110dBm | Three | Remote/Manual |

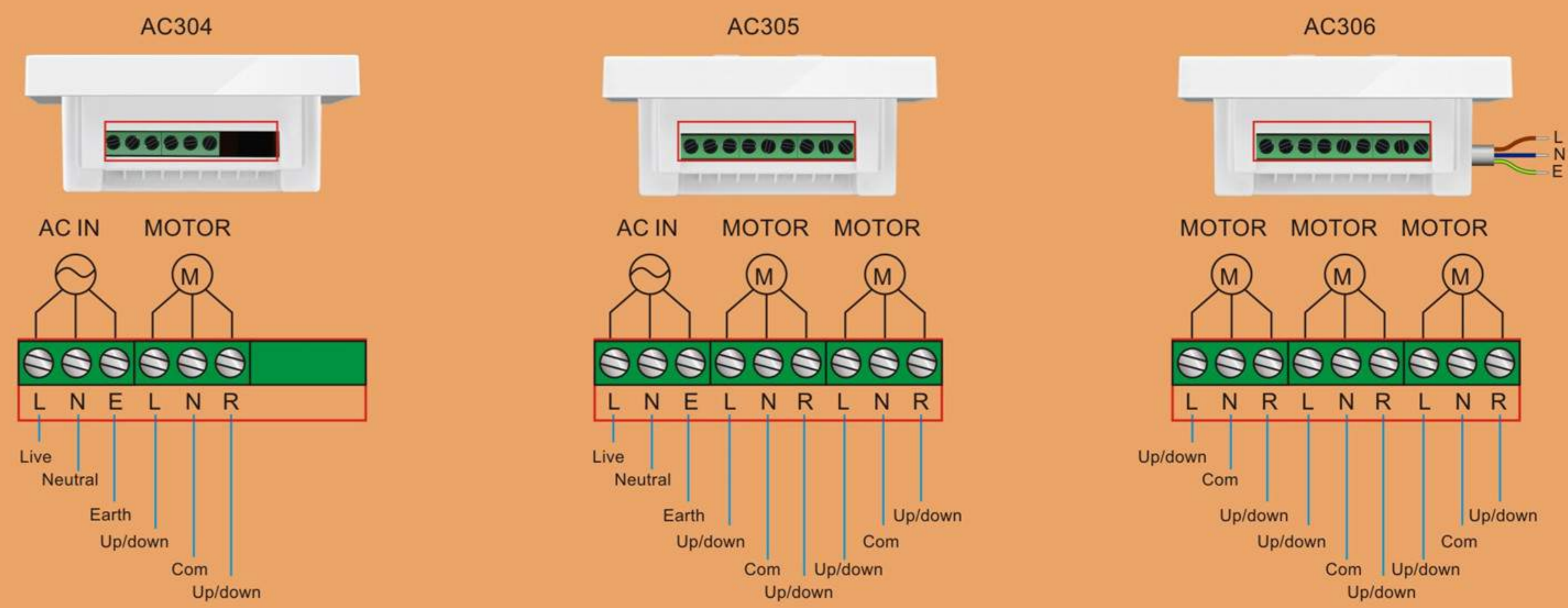
3. Installation and Wiring

AC111 Transmitter



Front

Back



AC304

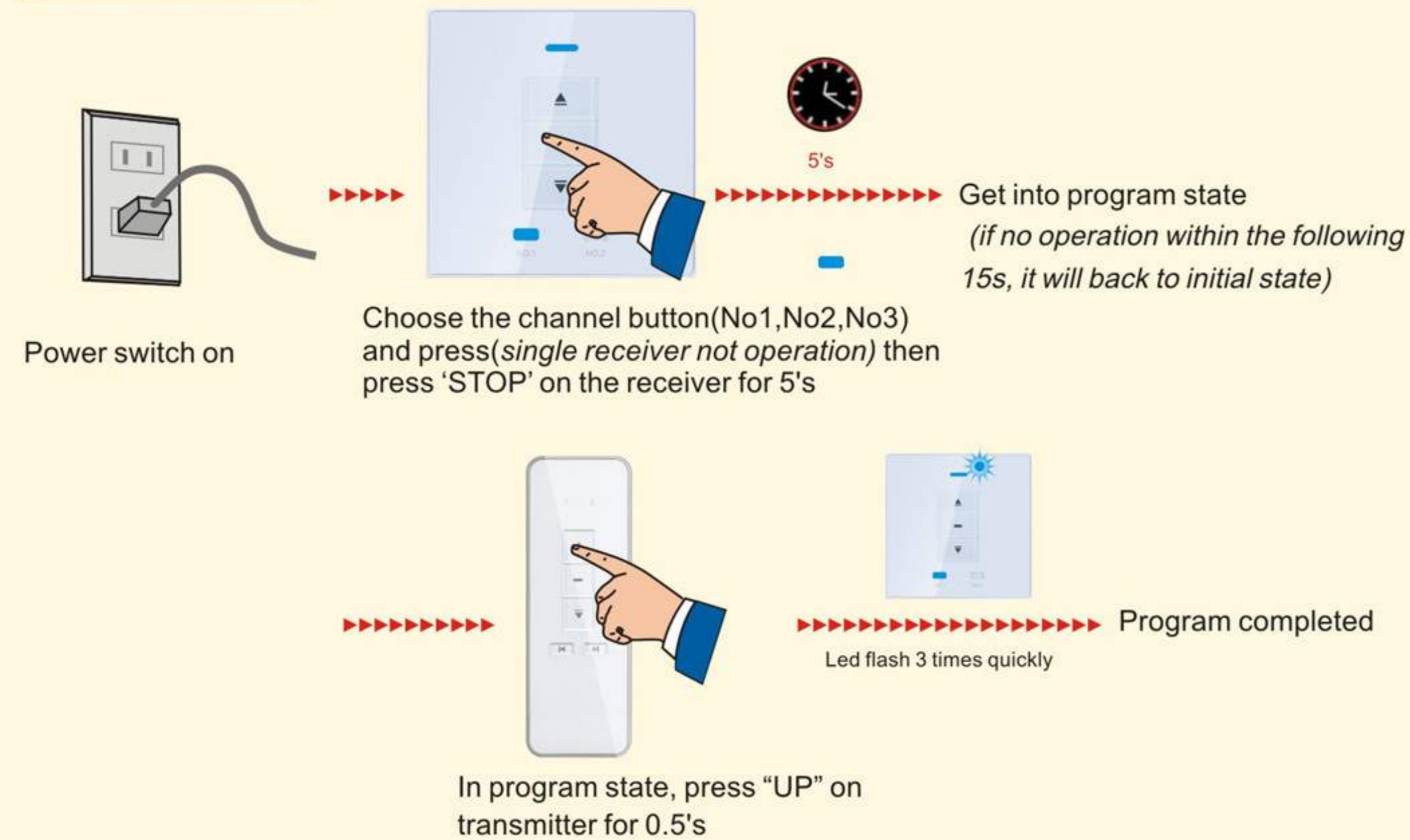
AC305

AC306

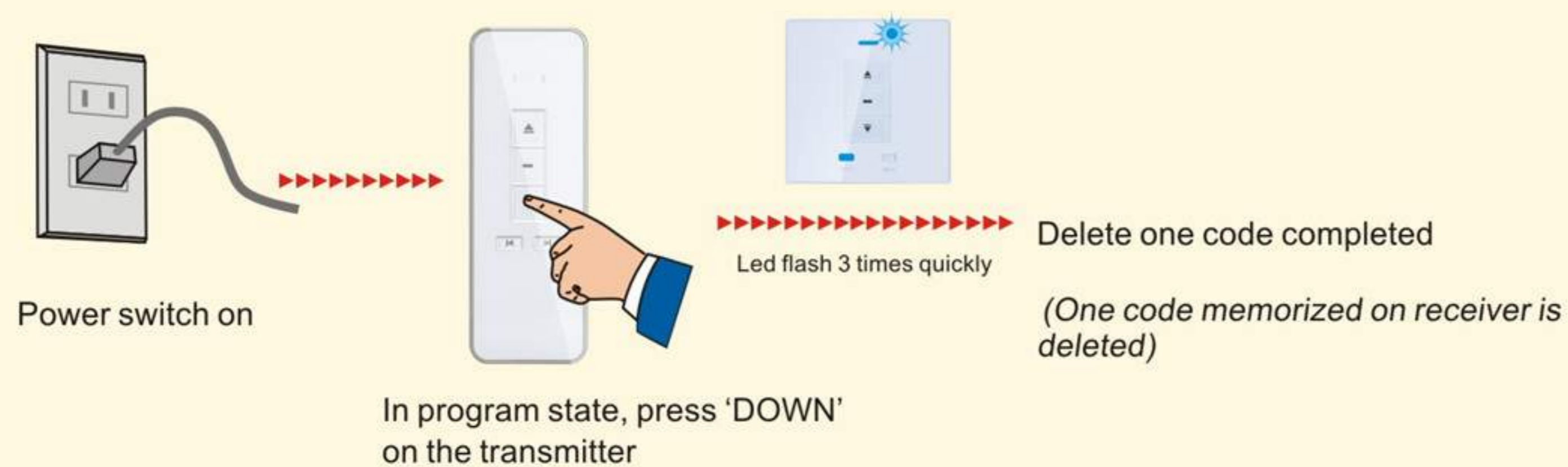
4. Operation

1. Max motor running time is 5mins, switch UP/DOWN delay time is 500ms;
2. No matter signal channel transmitter or multi channel transmitter, please choose the right channel which you want to program first perform following operation.

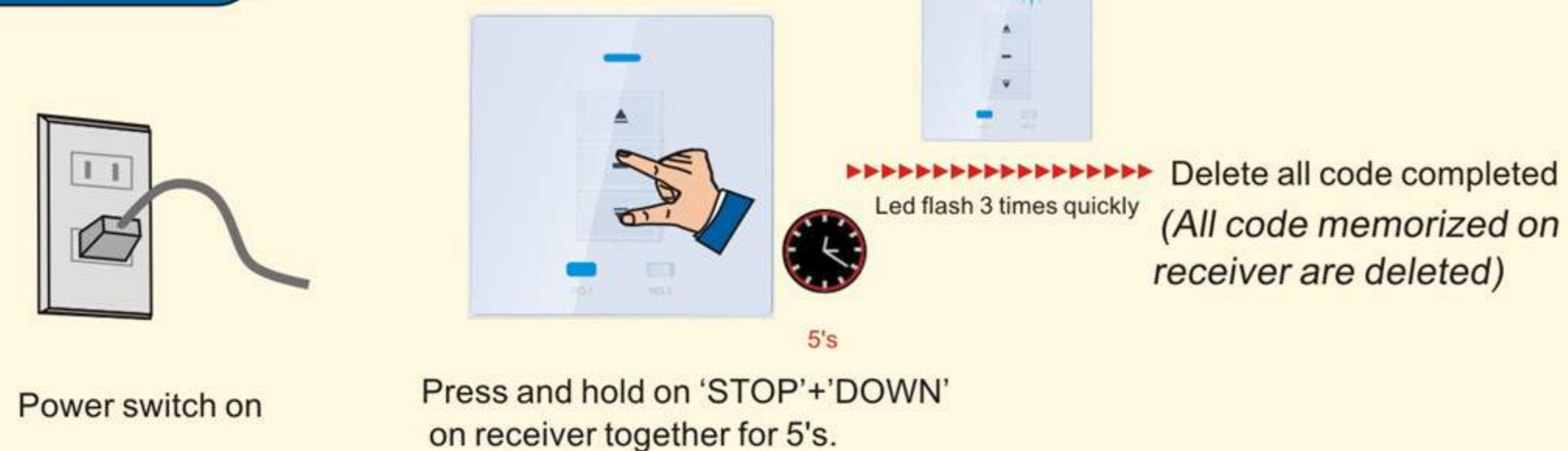
Program setting state



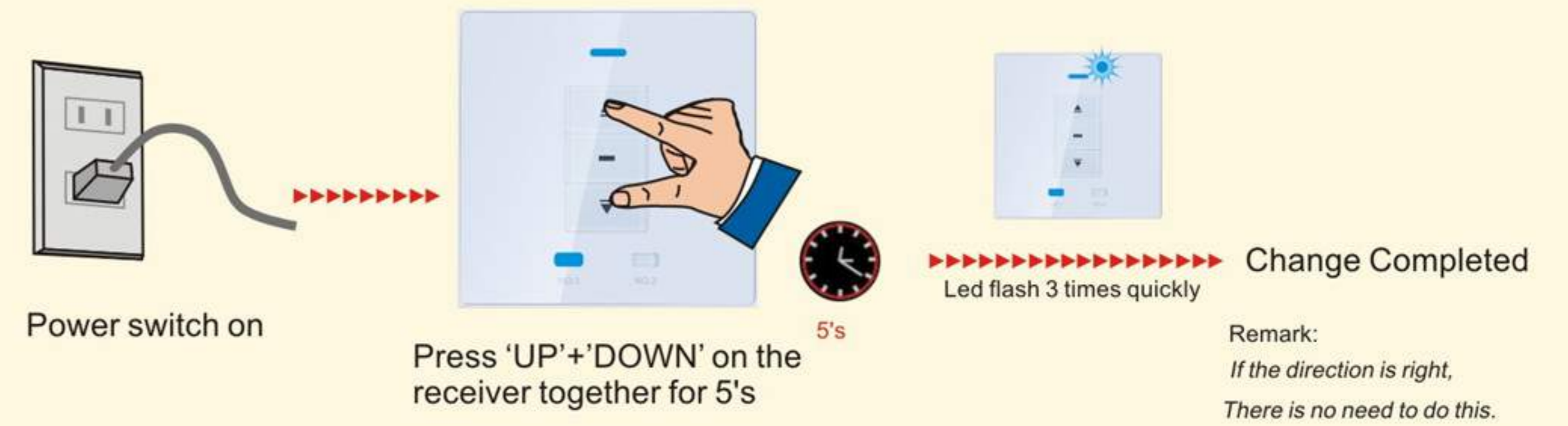
Delete one code



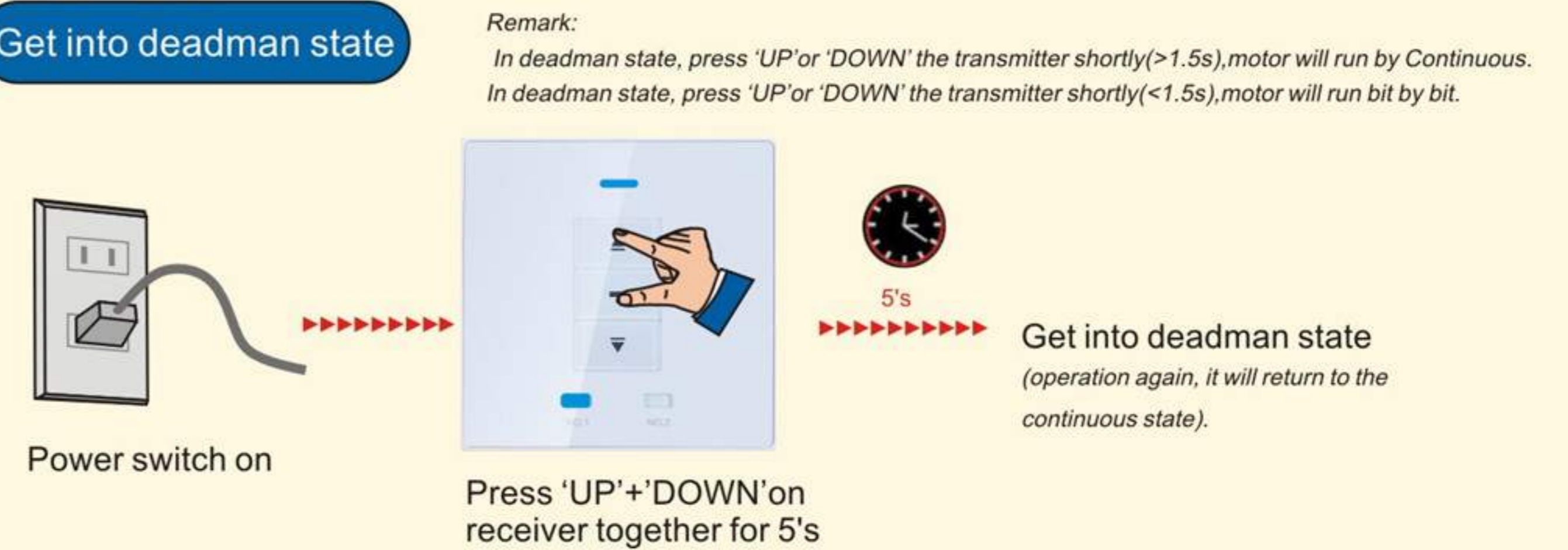
Delete all code



Change the direction



Get into deadman state



5. Troubleshooting

| No | Symptom | Probable Cause |
|----|--|--|
| 1 | Operation LED light flashes, but nothing happens when press remote control | Please check the connection of wires or check the program setting |
| 2 | The LED light of the transmitter is off or weak | Please check the battery of the receiver |
| 3 | The LED light of the transmitter and the receiver work well, but the motor does not work | Please check the connection and main power supply of motor, or check the main power supply |

Add: Operating Instructions for Remote

1. Program setting

- (1) Press the channel button on the transmitter to choose the channel needed to be set (if you are using single channel transmitter, no need to choose the channel)
- (2) Press the setting button (KEY) till the light of the receiver begins flashing. (The receiver will return to the original state if no operation is done after 10 seconds.)
- (3) Press the program setting button on the rear of the transmitter by ball pen till the light of the receiver stops flashing now program setting is complete.

2. Delete all stored channels' memory from the receiver

- (1) Press the program setting button (KEY) of the receiver for about 4 seconds till the light begins flashing quickly then loose it
- (2) Press the this buttons (KEY) again within six seconds till the light stops flashing now all the stored memory of the receiver have been deleted. (within 10 seconds, when the light is flashing quickly, if no operation is done the receiver will return to original state.)

3. Delete the stored memory of any channel

- (1) Press the channel button on the emitter to choose the channel needed to be deleted
- (2) Press the setting button (KEY) of the receiver till the light begins flashing. now the receiver is waiting for the delete command of the transmitter
- (3) Press the "DOWN" button of the transmitter, now the light of the receiver stops flashing means the memory has been deleted. (the same way to delete other channels)

4. How to operate the light

After connecting, either transmitter or manual switch's STOP button is pressed, the light will be ON, Pressing STOP button again will switch off the light freely.

5. Replacing battery

- (1) Open the back board of the transmitter with your hand pushing the cover forward.
- (2) Take out the old battery and then place the new one (12V)
- (3) Close the back board (Please take the old battery in the appointed place)