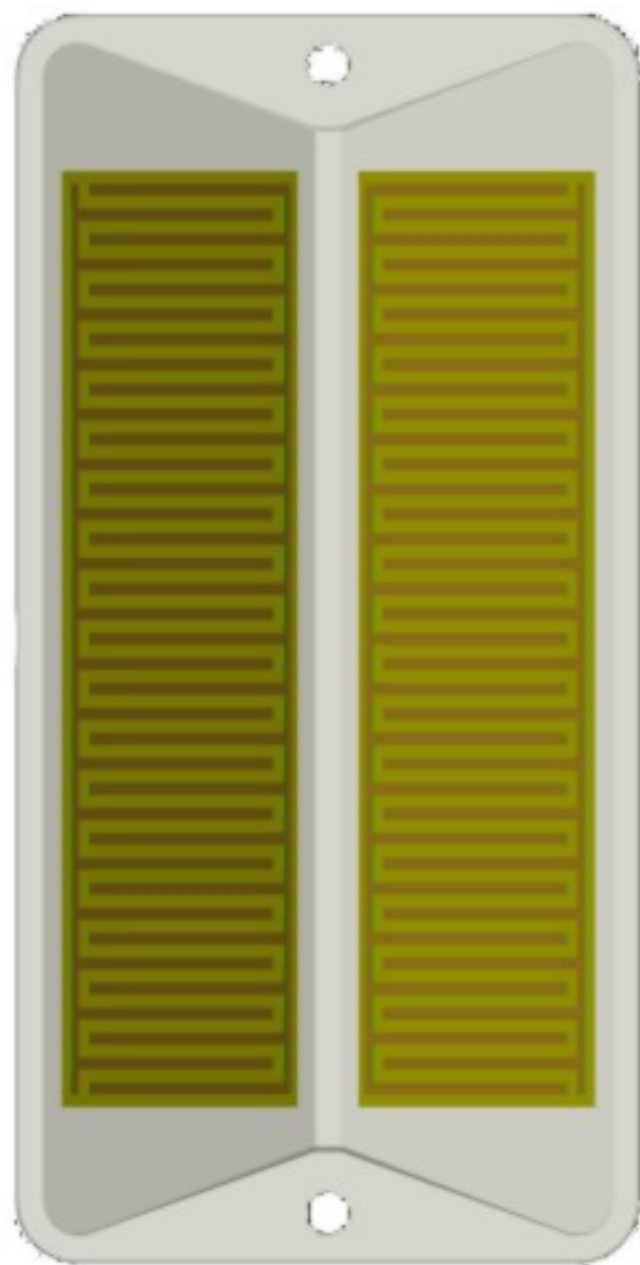


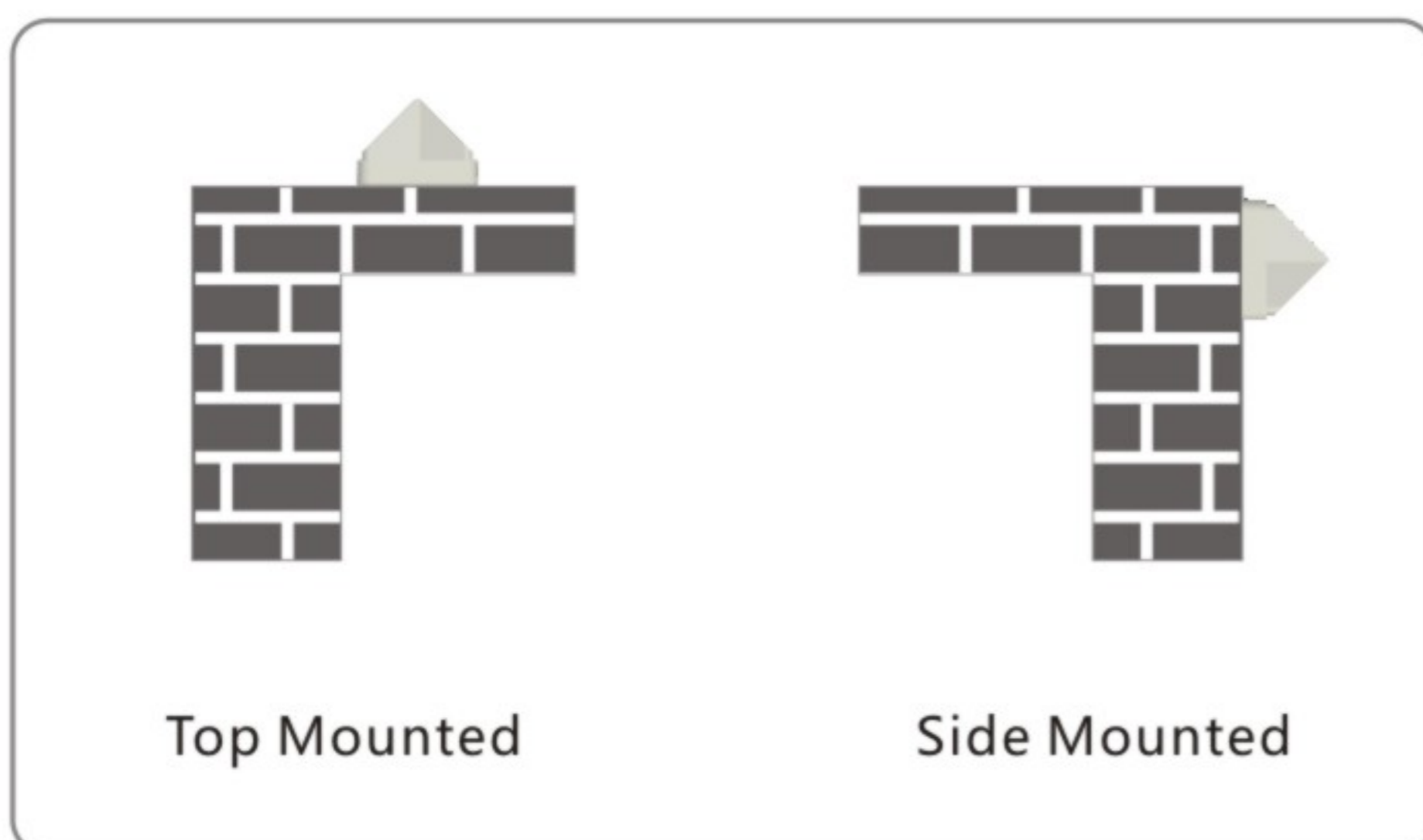
# Rain Sensor Manual



## 1、Product Features

- Exquisite appearance design;
- Anti UV radiation enclosure, suitable for outdoor installation;
- Sensitive to rain;
- The rain sensor panel is designed with 45 degrees and can keep dry.

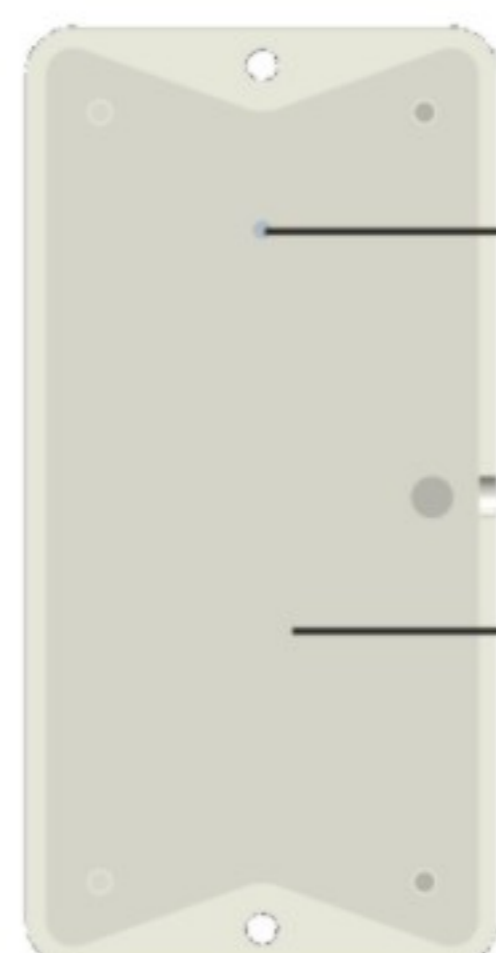
## ! Installation Method



## 2、Parameters

- Frequency: 433.92MHz
- Voltage: DC5V-24V
- Temperature:  $-20^{\circ}\text{C} \sim +85^{\circ}\text{C}$

## 3、Description



Learning key

Battery:6LR61

Wireless Rain Sensor

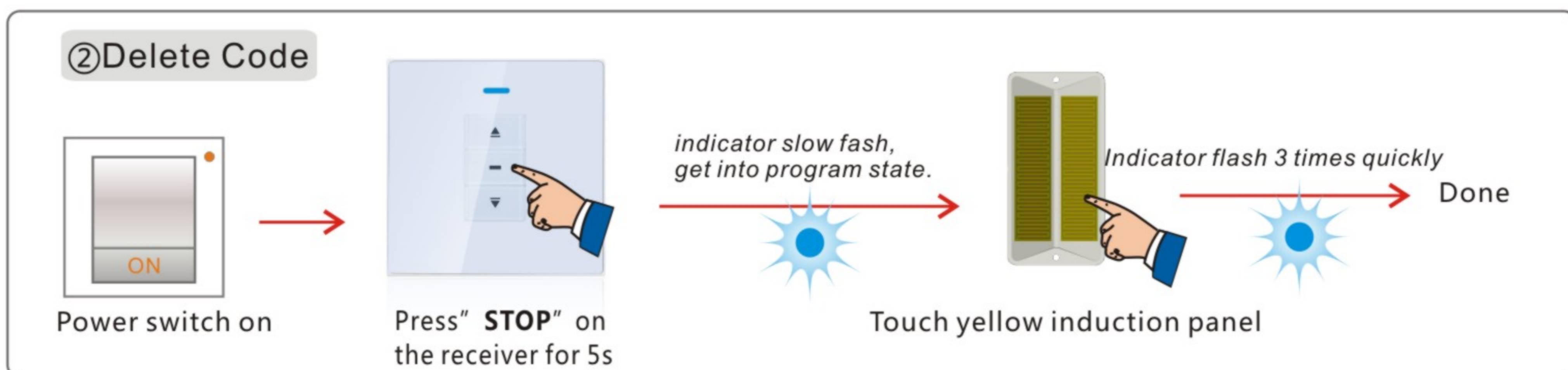
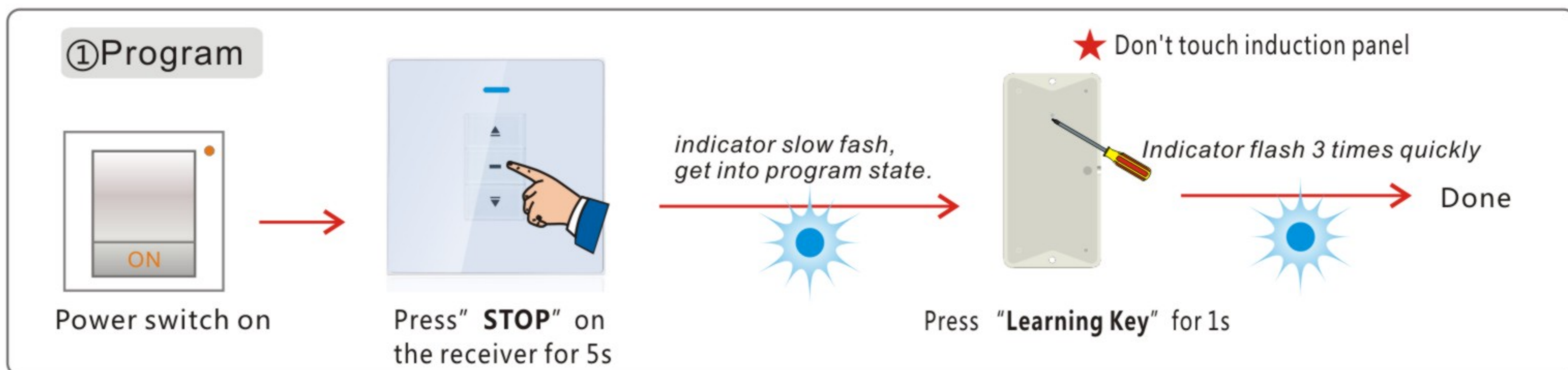


( White ) DC+  
( Brown ) signal 1  
( Black ) signal 2  
( Blue ) DC-/Neutral

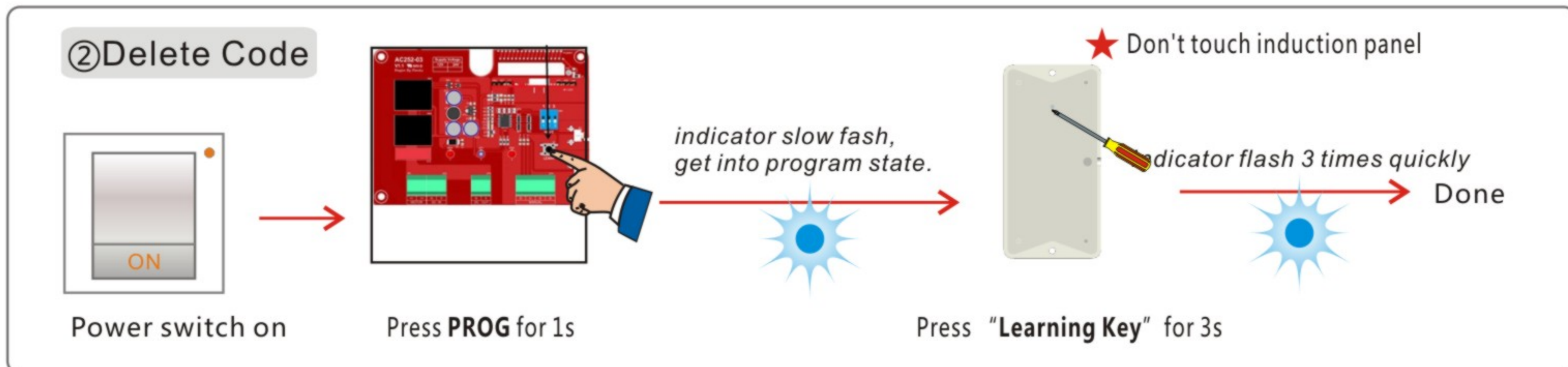
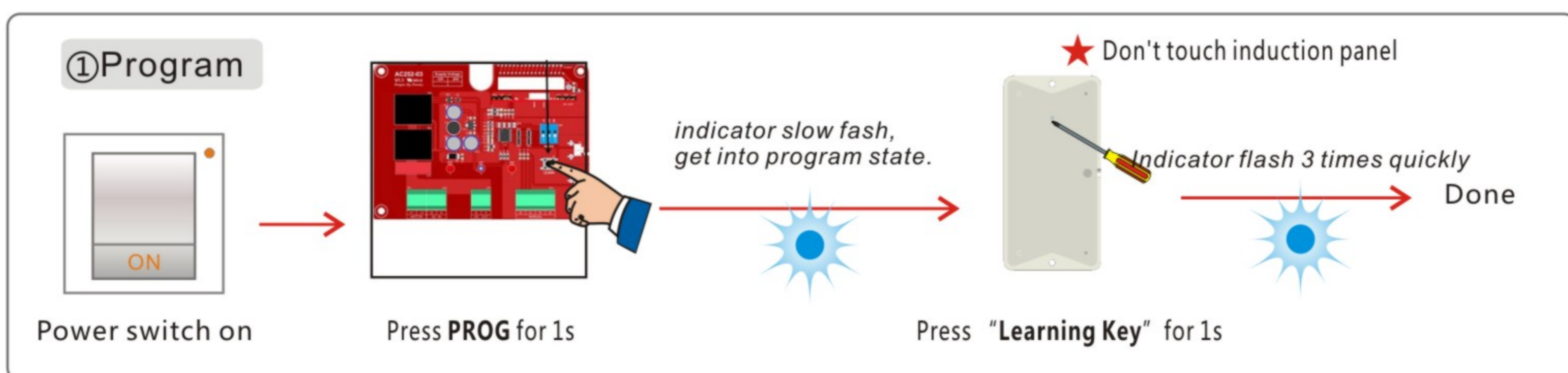
Wired Rain Sensor

## 4、Operation

### Wireless rain sensor work with wall receiver

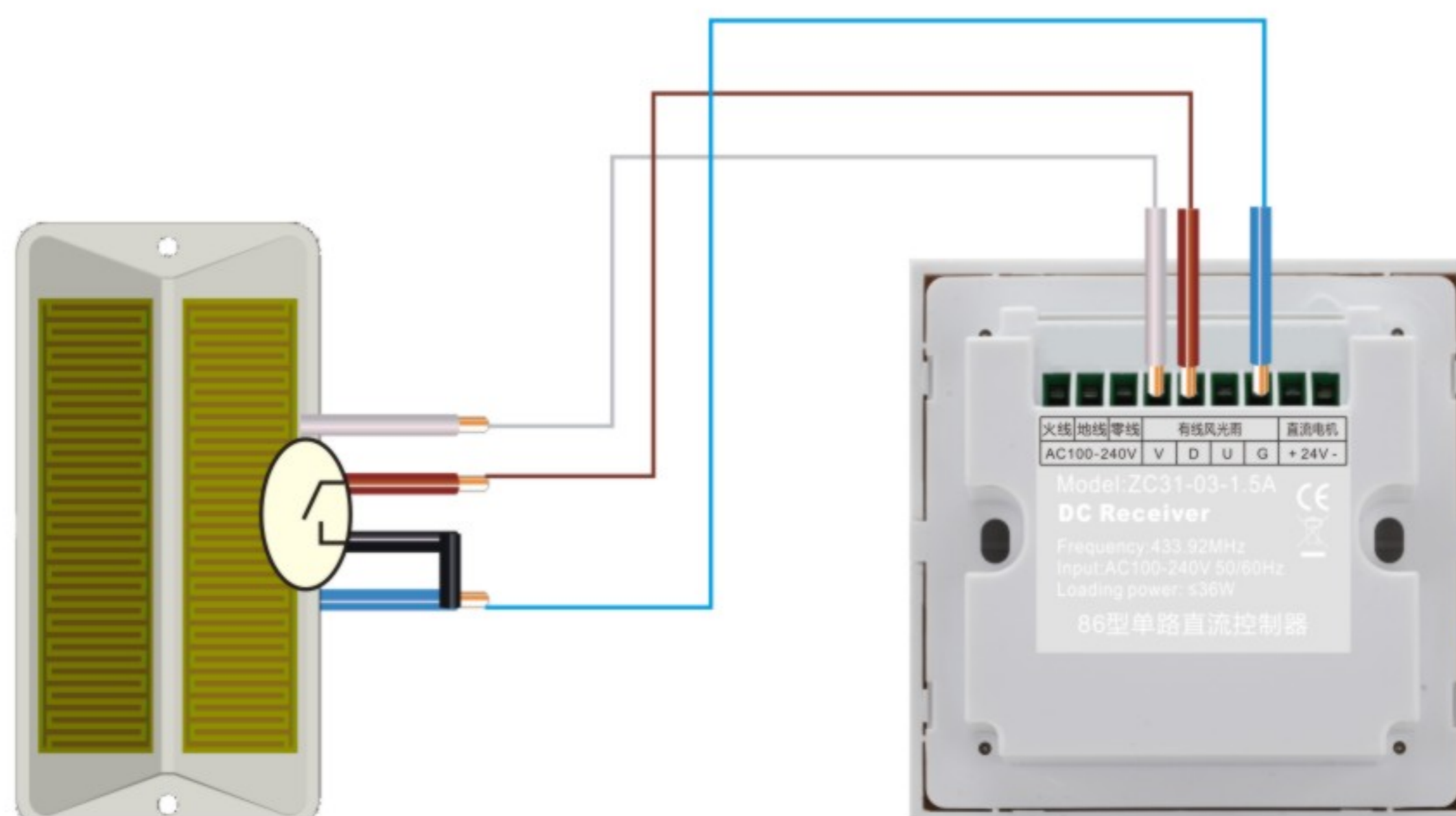


### Work with AC252 series receiver



## 5、Wiring

- ( White ) DC+
- ( Brown ) signal 1
- ( Black ) signal 2
- ( Blue ) DC-/Neutral



Wired Rain Sensor

Receiver